

**automation solutions**



## Vimar automation systems respond to your every need. Simply

Based on the values, experience, high-quality technology and design that have set us apart for over 60 years, we present you solutions for the automation of homes, buildings and boats: concrete, effective and innovative responses developed based on your personal needs and requirements. Join us as we present three automation systems - **By-me**, **By-com** and **By-me Marine** - and you will discover how we have managed to combine aesthetics with functionality, ease of installation with versatile application, and energy saving with outstanding performance. And if you get the impression that we have read your thoughts, don't be surprised: Vimar does this and more. Simply.





A dark, charcoal-style sketch of a modern building with large windows and a complex roofline. The drawing is overlaid with a grid of lines, creating a sense of architectural structure and depth. The text is centered over the middle of the image.

IS THERE AN INTELLIGENT SYSTEM  
THAT ADDS VALUE TO THE HOME WHILE ALSO  
SIMPLIFYING AND IMPROVING DAILY LIFE?





By-me is a home automation system that provides coordinated control of multiple functions. Control, comfort, sound system, energy efficiency and security are integrated into a smart technology that is shaped around your needs and grows with you. And with radio frequency the system consumes less power and uses it in a more intelligent way. That way even the environment is protected.



## Control.

With supervising devices

With room devices

Remote control



## Comfort.

Automations

Radiofrequency  
automations



## Sound system.

Total sound control  
Multichannel operation  
and compatibility  
Excellent audio quality



## Energy efficiency.

Consumption control  
Temperature management  
Load control

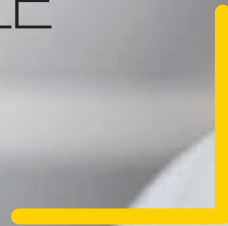


## Safety.

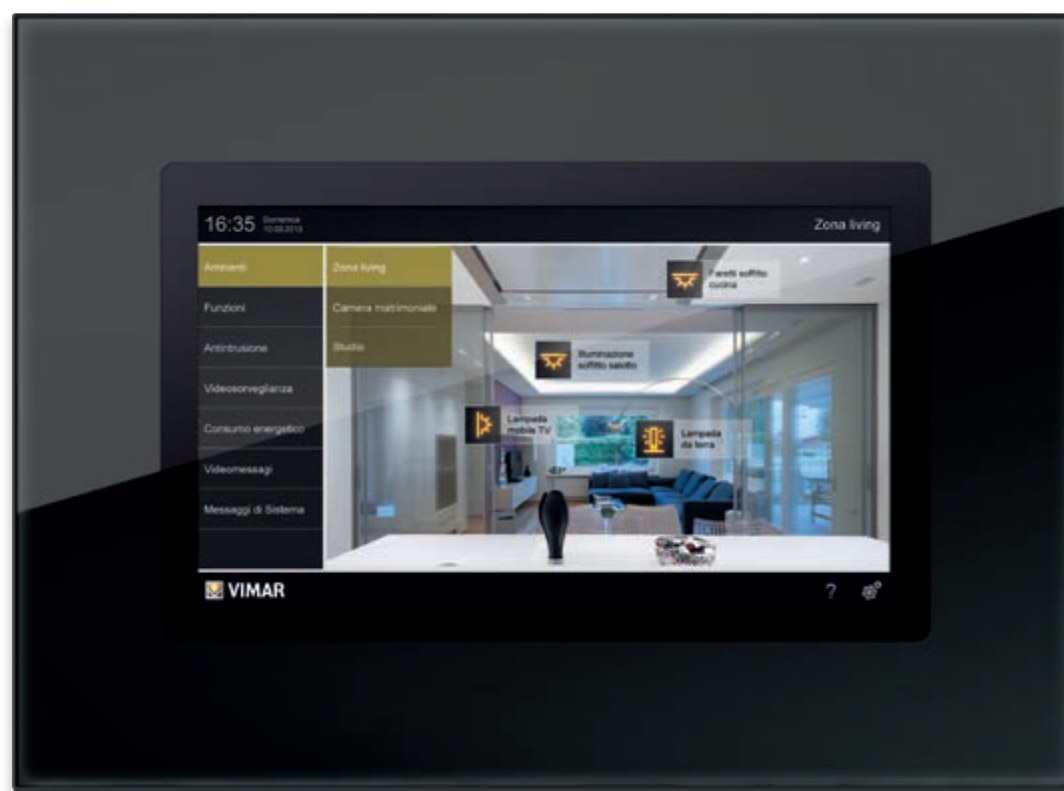
Video surveillance  
Video door entry  
Technical alarms  
Burglar alarm  
Access control



CAN I PERSONALISE  
EACH ROOM WITH  
LIGHTS, TEMPERATURE  
AND AUTOMATIONS THAT  
REFLECT THE STYLE AND  
MOOD OF THE PEOPLE  
WHO USE THEM?







With By-me each room responds to your wishes:  
at any time, for any occasion or necessity.

Simply touch the Multimedia Videotouch 10" display and in a few moments, for each room of the home, you can load one of 32 different temperature, lighting and comfort combinations, configured according to daily needs, special occasions, unforeseen necessities or pure personal pleasure.



#### **Control via multimedia devices.**

Also via smartphone, tablet and PC the entire home is always under your control, even if you are away from your home.



#### **4,3" Video touch screen, Full Flat, for system monitoring.**

An elegant technology for controlling the areas of the home, loading scenarios and monitoring climate, lights and automations and managing video door entry.



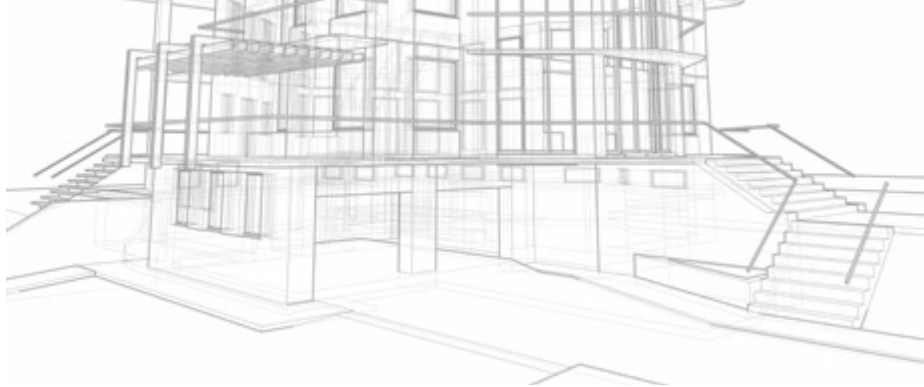
#### **Scenes control.**

Manages up to six different combinations of functions: for example with the "out" scene, the lights go out, the roller shutters come down and the temperature is lowered.



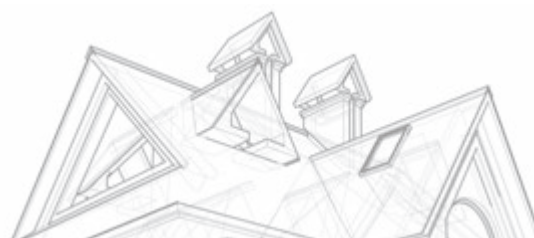
#### **Touch screen 3 modules for local supervision.**

An all-in-one digital appliance from which it is possible to control a single room and manage up to 18 different functions.



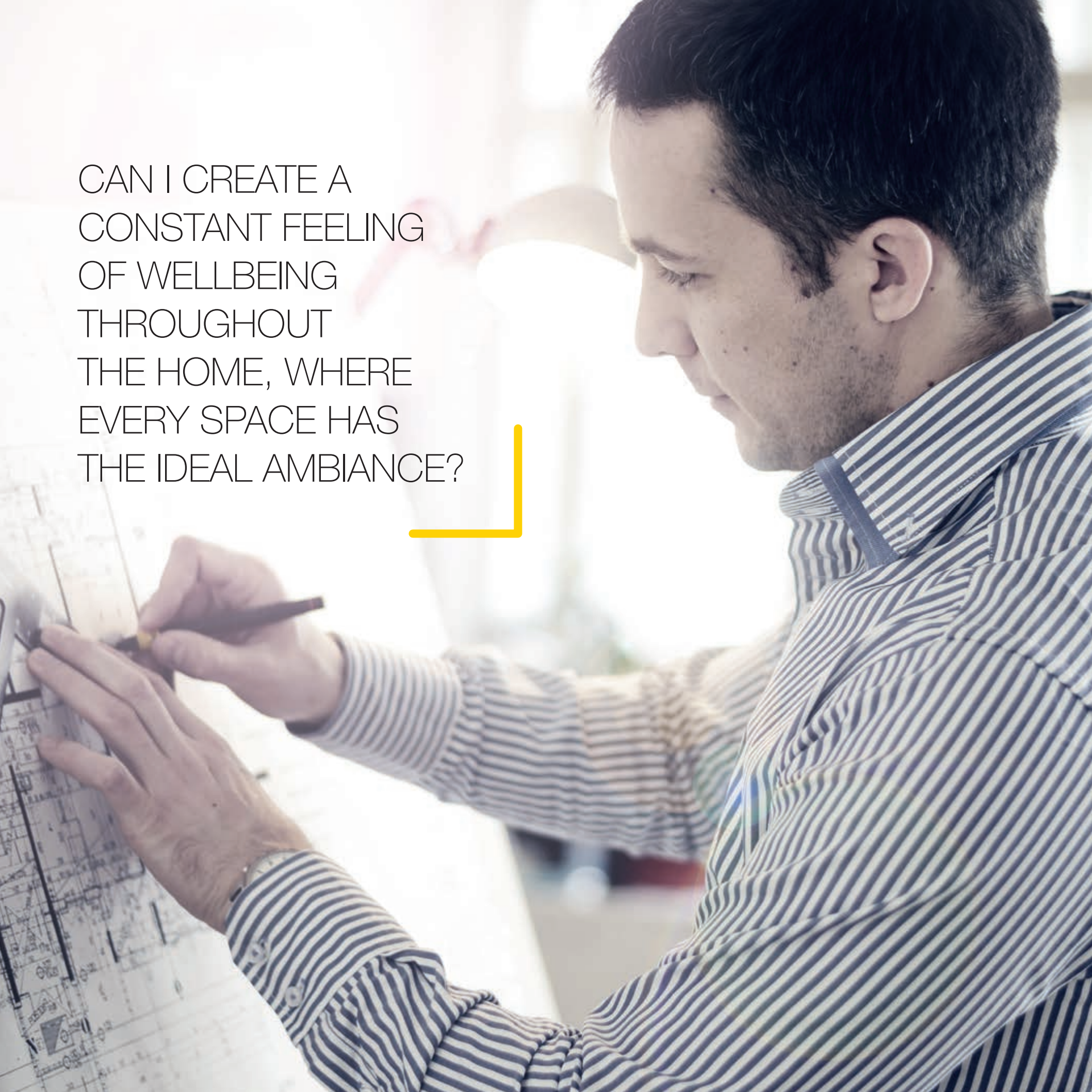
### Controls.

Multifunctional, enable various operations to be controlled from a single device.





CAN I CREATE A  
CONSTANT FEELING  
OF WELLBEING  
THROUGHOUT  
THE HOME, WHERE  
EVERY SPACE HAS  
THE IDEAL AMBIANCE?







With By-me comfort is total: each space welcomes you with your preferred scenario and it only takes an instant to modify it as you please.

From the touch screen you can set and load the temperature selected for each area and each moment of the day. Simply press to modify it and adjust the lighting: creating cosy relaxation areas and ensuring you have the right amount of light for your daily activities is instant and easy.



**Touch screen for lighting scenario configuration.**

Simply touch the display to load a number of lighting scenarios and achieve maximum comfort.



**Dimmer for lighting control.**

Varies the lighting with buttons that are pleasantly silky to the touch.



**Adjustable RGB LED lamp.**

Can be used to create interplay between colours, for appealing atmospheres.



**Automations.**

At the touch of a finger you can raise or lower the roller shutters or control other automations, also using radio frequency, wireless or battery-operated devices.



#### Universal dimmers.

Can be used to control brightness intensity and reduce electricity consumption. For all types of LED, adjustable compact fluorescent, halogen and LED strip lamps.



CAN MUSIC  
AND RADIO BE  
BROADCAST  
INDEPENDENTLY  
FROM ROOM  
TO ROOM WITH  
EXCELLENT AUDIO  
QUALITY?





By-me can be used to create customised performances in any room within the home: every note is broadcast without distortion or interference.

Simply touch the display to listen to music or your favourite radio programme, wherever you are in the house. The sound broadcasting system integrated into the home automation scenarios and the various independent audio sources allow you to customise the sound in every room and manage it as desired. With the most faithful sound reproduction of the highest quality.

**Speaker.**

Consistently excellent audio quality with no distortion or interference.

**Multichannel operation.**

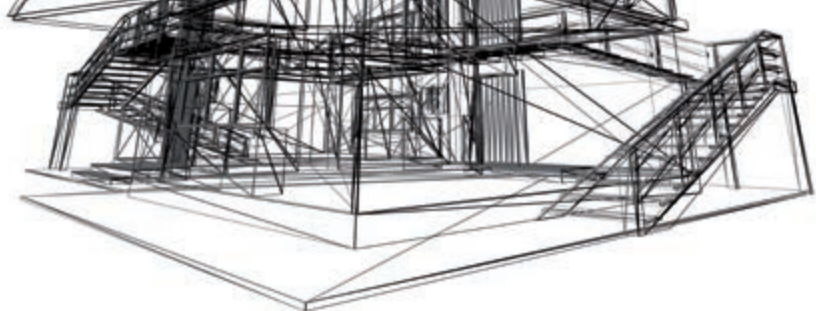
RCA inputs for audio sources, for use in the multiroom system.

**Docking station.**

Audio input that enables MP3 players, iPods and iPhones to be connected directly to the speaker system.

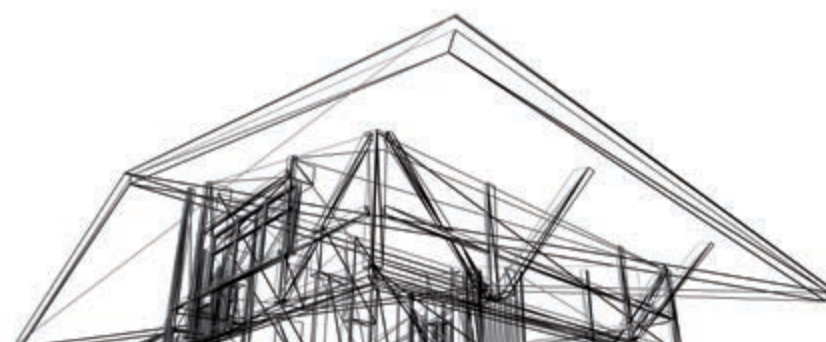
**Sound system controls.**

To adjust the volume and change tracks so that the music plays according to preference.



### 3-module touch screen for music control.

To manage music quickly and simply in all rooms of the home: just touch the screen to play the selected song or radio programme.





IS THERE  
A TECHNOLOGY  
THAT HELPS ME  
TO REDUCE  
POWER USAGE  
AND IMPROVE  
MY HOME'S  
ENERGY RATING?







With By-me no energy is wasted: the control is constant, the power distribution is intelligent and the savings are significant.

The “Energy Guard” functions monitors consumption in real time, assuring prompt information on the energy usage. The touch screen records precise information on consumption, both instantaneously and for a given time frame, and displays consumption logs to assure more aware energy use.



**Touch screen for power consumption monitoring.**

Enables you to check the power usage of all household devices. Where necessary you can manually force a disconnection priority.



**Thermostat.**

Adjusts the temperature of each room independently and, integrated into programmed scenarios, optimises power consumption.



**Load control.**

Manages connected loads and disconnects non-priority loads to prevent black-outs.



**Universal dimmers.**

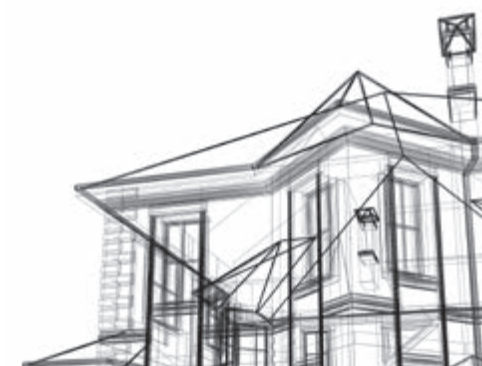
Sets the lighting the way you want it: another easy way to save energy without making sacrifices.



### **Radio frequency controls.**

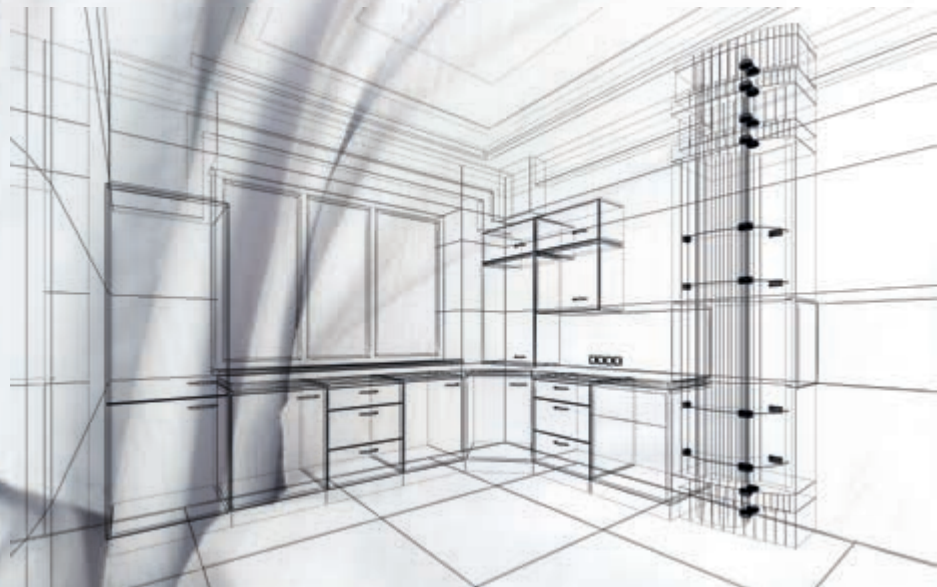


Enhance the system's installation flexibility while also respecting the environment: radio frequency controls require no wiring or batteries. They can be installed on any surface without masonry work and with minimal energy waste.





CAN I DEFEND  
THE HOME FROM  
EXTERNAL DANGERS  
AND MAKE THE  
OCCUPANTS FEEL  
PROTECTED AND  
SECURE?





With By-me safety is at its maximum level: the entire home is under surveillance and you are free to enjoy peace of mind.

By-me silently protects the whole home, watching over people and their possessions. And from the multimedia video touch screen you can keep an eye on the children while they are sleeping or playing, at all times, without having to constantly stand over them.



**Touch screen for burglar alarm monitoring.**

Manage the burglar alarm system with different access rights depending on the code typed on the touch screen.



**Gas leak detector.**

Senses the fault, triggers the alarm, sends a text message signal and activates the various devices to ensure that the home is perfectly safe.



**IR detector.**

Detects the unauthorised presence of people and automatically activates the alarm.



**Video door entry unit.**

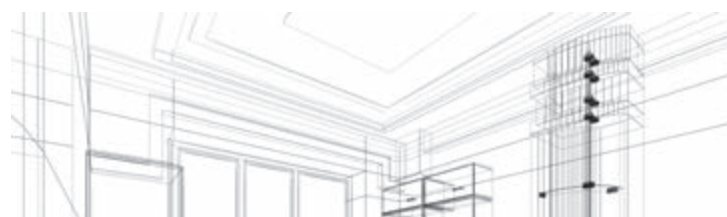
Video door entry units to welcome your friends to your home.

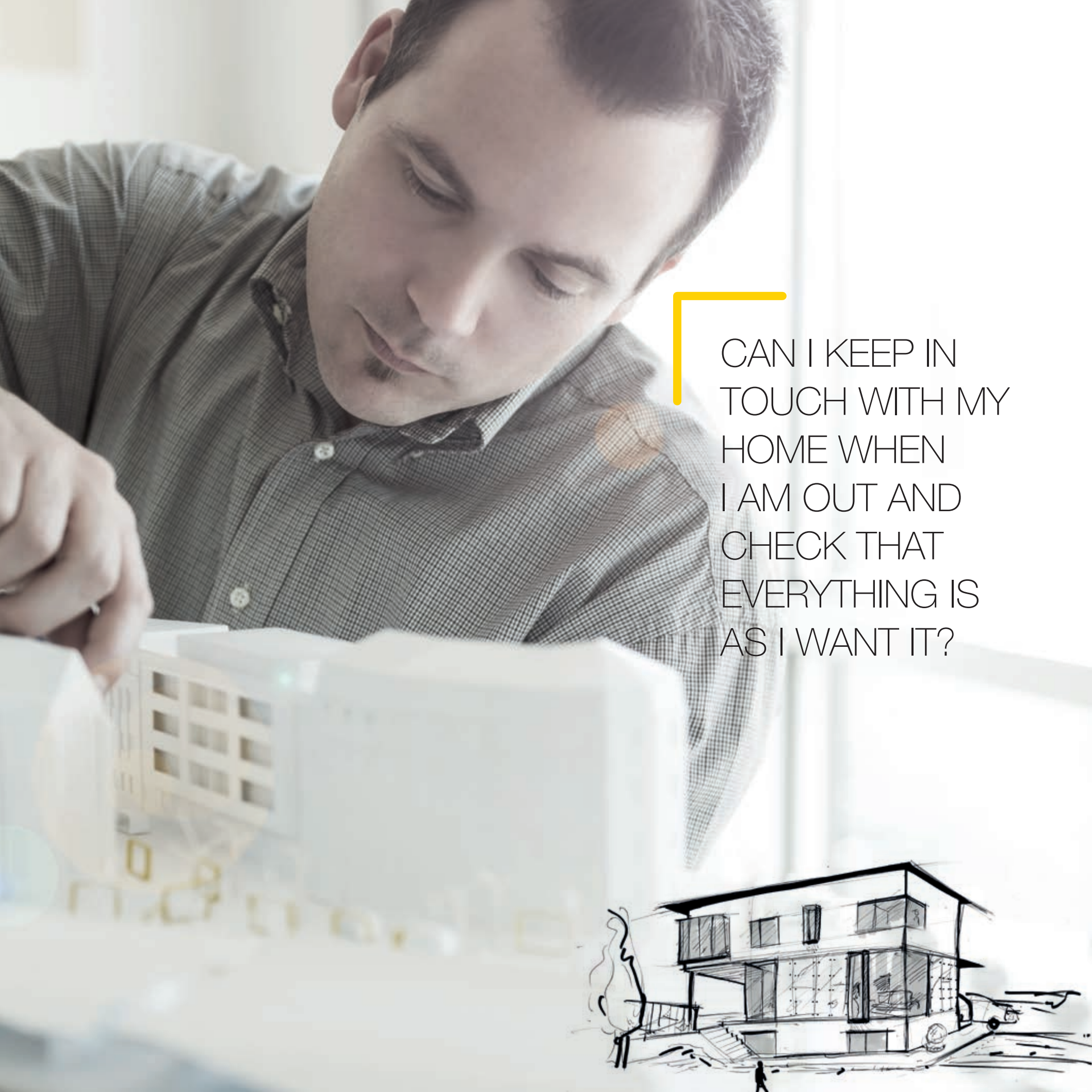




### Digital keypad.

Turns the burglar alarm system on and off, either totally or partially, by means of a numerical code.



A man with short dark hair, wearing a grey button-down shirt, is looking down at a white architectural model of a building. The model shows a multi-story structure with windows and a flat roof. The background is a bright, out-of-focus interior space.

CAN I KEEP IN  
TOUCH WITH MY  
HOME WHEN  
I AM OUT AND  
CHECK THAT  
EVERYTHING IS  
AS I WANT IT?





26

27

By-me talks to you: both in and out of the home.  
Communication knows no limits.

When you're at home you can monitor the whole system from a LAN or WI-FI network and, with the video touch screen and the door entry panels, nothing happening outside will escape your attention. When you are out you can dialogue with the home via the Internet from your computer, smartphone or latest-generation tablet such as iPhone and iPad.



**Video surveillance.**

HD cameras and DVRs that control and record all that is happening around your home, ensuring full security.

**Call push button.**

For making a landing call to access the property, even after passing the guard room.

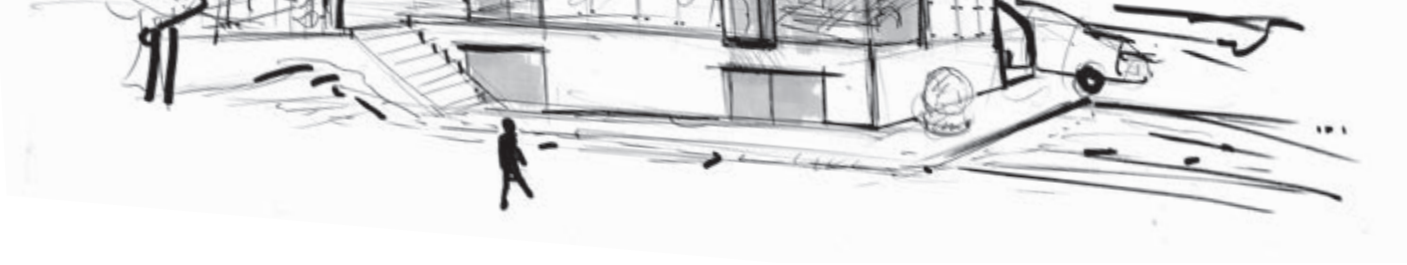
**Speakerphone.**

Functions as a straightforward audio door entry unit or allows two-way communication with the various rooms in the home.

**Video door entrance panel.**

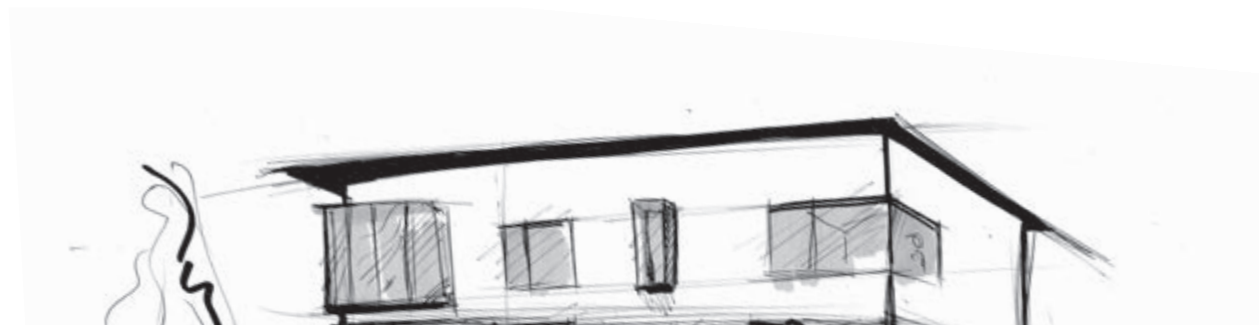
The panels enable you to communicate with people outside the property and watch and listen to everything that is happening.






#### Video door entry unit.

The HD images of the video door entry unit makes it easier to welcome your guests and control your home via the home automation menu.



A grayscale architectural wireframe sketch of a city street. The scene features several tall, multi-story buildings with detailed window patterns. The ground is marked with a perspective grid of lines. The overall style is technical and minimalist, using only black lines on a light gray background.

CAN I MANAGE AND OPTIMISE ALL  
THE FUNCTIONS AND AUTOMATIONS  
IN MY FACILITY IN A SIMPLE WAY?





By-com solutions increase the performance, comfort and energy efficiency of your facility, making it more intelligent and increasing its value. Automation, safety and communication systems that are intercompatible, centralised and interoperable with the KNX universe, as well as being easy to install, use and implement. The single interface with Vimar guarantees efficient support services and ongoing technical assistance.

  
**by-com**  
building automation

  
**KNX**



## Language.

KNX standard: the most secure connection for interfacing all functions.

## For offices.

A secure and intelligent system that allows constant communication among all the devices.



## For hotels.

Comprehensive, effective and optimised management that ensures impeccable service.

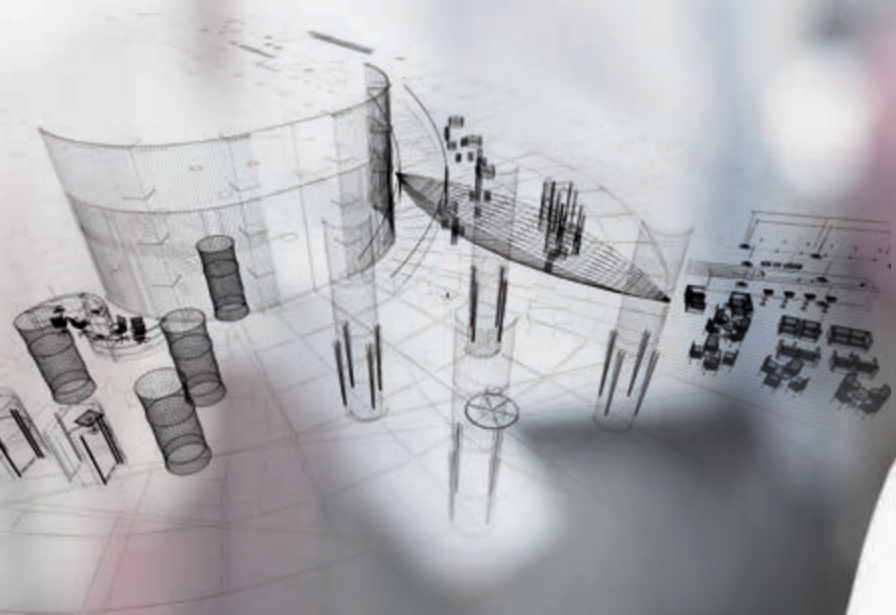


## Software.

Well-contact Suite: six software versions dedicated to system monitoring.



CAN I COMMUNICATE  
SECURELY AND  
INSTANTLY WITH  
ALL THE PRODUCTS  
IN THE SYSTEM?







With Well-contact Plus control is complete: automation, entry, HVAC and energy saving are managed by a single system developed to the KNX standard.

Whether in small or large hotels, offices, multi-purpose centres or even gyms, the Well-contact Plus system is the solution that provides constant control over comfort and safety in every single room. Lights, temperature, inputs, outputs, everything is programmed via computer with the ETS software, which can be managed and monitored using the Well-contact Suite software.



-  **8-module touch screen with 4,3" display.**  
For total and immediate supervision of even the largest common areas.




-  **Transponder reader.**  
Allows access by cleared personnel: move the transponder card near to the reader and identification is instantaneous.



-  **Thermostat.**  
To regulate and keep the temperature constantly under control from one office to another.



-  **Local touch screen.**  
Allows instant and user-friendly monitoring of the individual room. To control lights and temperature and activate scenes.



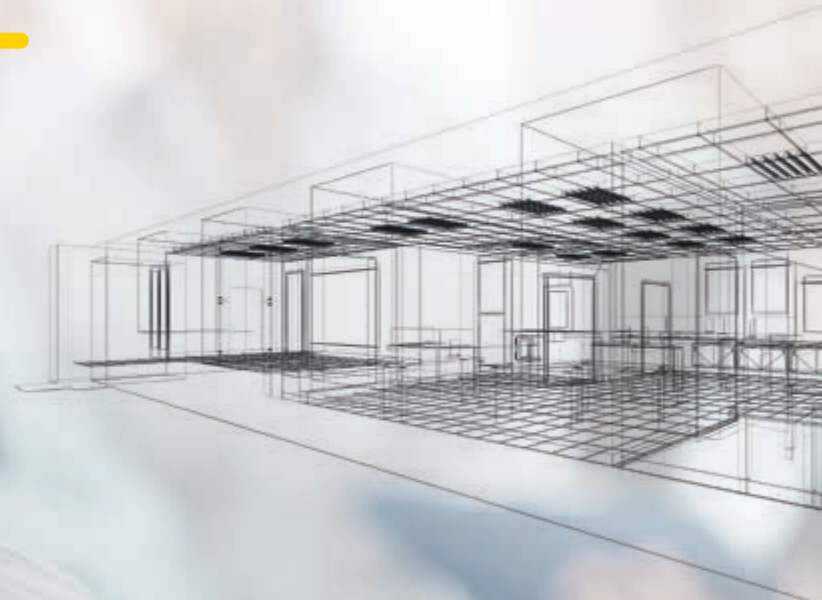


### Controls.

With two modules, accommodate up to 4 different and independent buttons that can therefore manage four different functions. All buttons are interchangeable with 1 or 2 modules. They can also be customised with icons that indicate their function and LED backlighting that makes them visible even in the dark.



CAN I GUARANTEE  
TOTAL SECURITY  
FOR ALL ACCESSES  
AND MONITOR ALL  
THE ROOMS IN MY  
PROPERTY?





With Well-contact Plus you can count on fully reliable transit control: all entrances and exits are monitored and supervision of rooms is simple and immediate.

In structures such as offices where secure access is essential: Well-contact Plus guarantees fully reliable transit control. Furthermore it controls temperature and lighting in all rooms: both can be modified and varied according to the room's usage and natural lighting. For increased energy savings.





**3-module touch screen.**  
Simply touch the display to control the lights and temperature of a single room without getting up from your desk.



**IR detector.**  
Activates a signal when a person passes by.



**Thermostat.**  
To regulate and keep the temperature constantly under control from one office to another.



**Controls.**  
Independent buttons that can be customised with icons that indicate their function.



### Transponder reader.

Allows access to the premises only by cleared personnel: simply move the transponder card near to the reader and identification is instantaneous.

CAN I CONTROL  
THE AUTOMATIONS  
IN EVERY ROOM  
OF MY HOTEL AND  
ENSURE TOTAL  
COMFORT FOR THE  
CUSTOMER?









With Well-contact Plus all the services in the rooms are under control: when the customer enters the lights are already on and the temperature is ideal.

Well-contact Plus manages all the variables in a room: the customer enters using the key card, which simultaneously activates the lights and services. The temperature that welcomes the guest is already ideal, because from the reception it is possible to control the climate by setting one of three levels (economy, stand-by or comfort) based on the occupancy status of the rooms. And energy saving is guaranteed.




 **Reader with vertical pocket.**  
Activated by inserting the card, it controls loads, lights, roller shutters, scenarios and the temperature of the room.




 **Transponder reader.**  
Elegant and refined controls indicate access status, customer or staff presence and any emergency calls.



 **Local touch screen.**  
Allows instant and user-friendly monitoring of the individual room.



 **Cord-operated push button.**  
From the bathroom just as from any other room, it transmits the call for help to the reception.



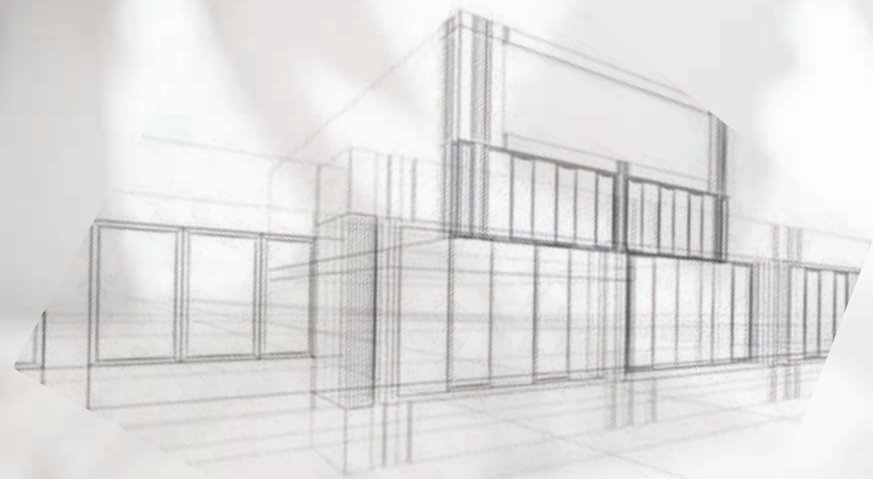
### Controls.

Multifunctional, controlling all the various operations from a single device, every function corresponds to an elegant icon.



A man with dark hair and glasses, wearing a light-colored sweater over a collared shirt, is looking at a tablet. In the background, other people are blurred, suggesting a meeting or office environment. A yellow L-shaped graphic element is positioned to the left of the text.

IS THERE A  
SIMPLE AND  
SECURE WAY  
OF MONITORING  
THE DIFFERENT  
AREAS OF THE  
BUILDING?







Using the Well-contact Suite software you can control every from your computer screen.

Different levels of password-activated access offers customised control according to function. Well-contact Suite is the new Vimar software for hotels and offices: it consists of 6 applications and an interface that is interoperable with the structure's existing management systems. The flexibility of the program is guaranteed by the KNX standard that allows each individual device - each with their own resident intelligence - to carry out the requested functions directly, while keeping in constant communication with all the other elements in the network.



## Top

To control large hotels with a potentially limitless number of rooms and stations. This application has 7 password levels and allows the planner to be used for supervising arrivals and departures.



## Client

Basic and Top application licence, enables the system to be managed from multiple stations.



## Basic

To manage a hotel with up to 50 rooms from a single station. The 5 password levels guarantee secure supervision of the entire system. And checking arrivals and departures is easy with the planner.



## Office

Dedicated to offices and business structures, it enables the functions of a potentially limitless number of rooms to be managed from one station. With 7 password levels, control can be targeted and secure.



## Light

To manage a hotel with up to 15 rooms from a single station. The 5 password levels guarantee secure supervision of the entire system. And checking arrivals and departures is easy with the planner.



## Client Office

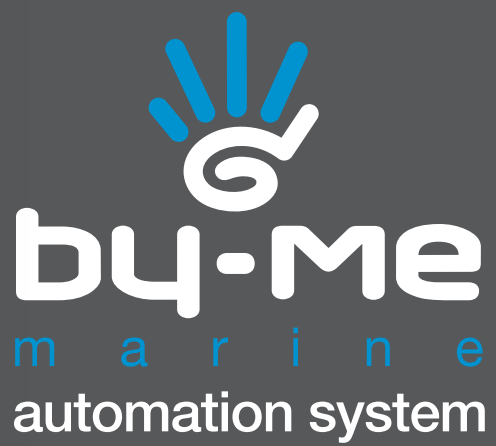
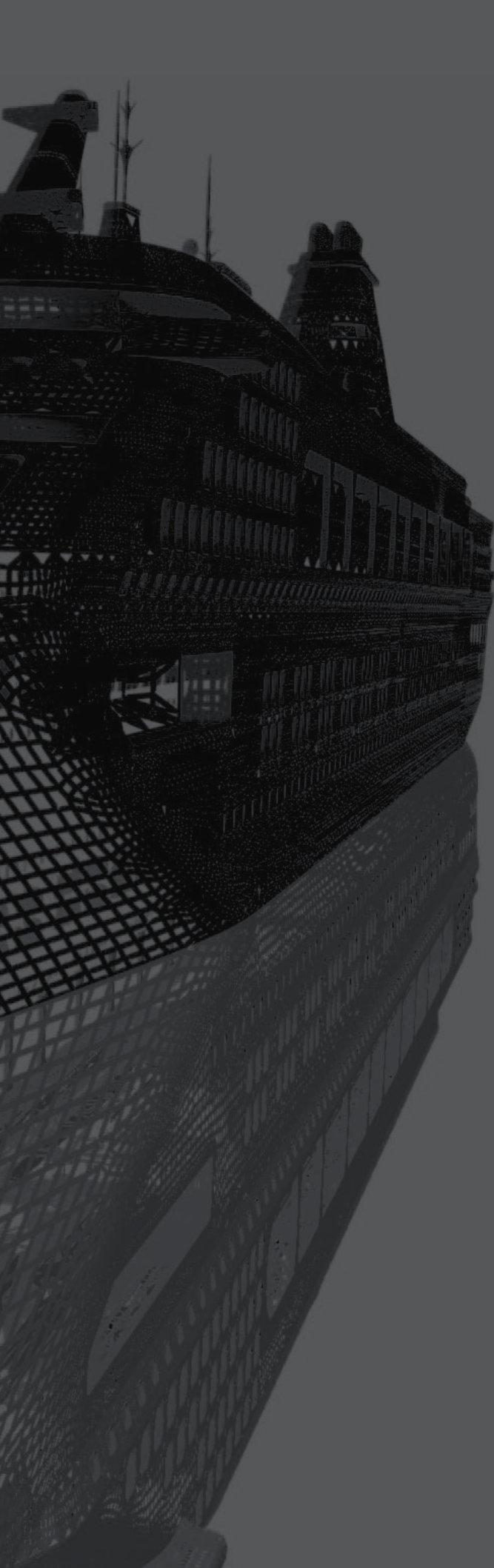
Office application licence, permits access to the program from multiple stations.

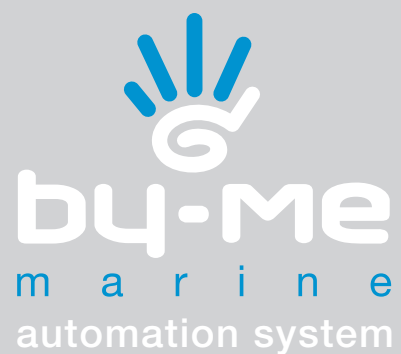






CAN I HAVE AN ON-BOARD SYSTEM THAT  
WILL MAKE CRUISING A MORE COMFORTABLE  
AND PEACEFUL EXPERIENCE?



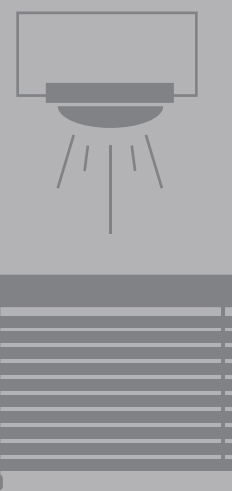


By-me Marine is the Vimar automation system for boats: a system designed to deliver all the benefits, practicality and comfort of an automation system that is always at your command, capable of withstanding humidity, saline atmospheres and vibration. From the bridge, from the captain's cabin or from any other point on the ship, By-me Marine offers top performance in any conditions: the entire lighting and automation system is managed with a single touch of the controls or via a multi-functional remote control.



## Scenes.

Programmed on the control panel, activated at the touch of a button.



## Lights and roller shutters.

For switching groups of lights on and off and regulating their intensity.





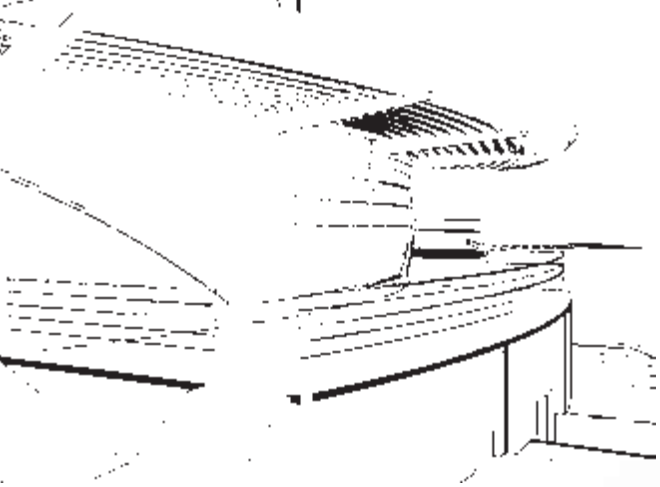
## Scene control.

Devices controlling temperature, lights and roller shutters are organised into scenarios that activate at a preset time.



## Multifunction remote control.

The entire system can be managed at the push of a button using the multifunction remote control.



IS THERE A COMPREHEN-  
SIVE AND RELIABLE  
WEATHER-PROOF  
SYSTEM CAPABLE OF  
COORDINATING ALL  
THE AUTOMATIONS  
ON MY BOAT?





With By-me Marine, onboard safety is assured by an efficient automation system that increases guests' comfort and simplifies the cruise experience.

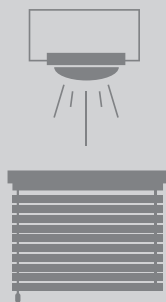
An automation system, tested on the sea with thousands of hours of navigation, that enables you to set sail in total safety and comfort. All using the By-me Marine automation system by Vimar and the high quality of its 'resined' products, some of which run at 12/24 V a.c. and d.c. By-me Marine manages the electrical system and automations of ships and yachts, responding to the specific needs of each individual consumer.





#### Control unit.

This is the heart of the system, where all the functions are programmed and managed easily and safely.



#### Scene control.

You can create the right atmosphere at any time, managing lights, temperature and roller shutters easily at the touch of a button.



#### Multi-function remote control.

Thanks to infrared technology you can manage all functions using a remote control while comfortably seated.



#### Video surveillance.

DVR and cameras guard your space, ensuring total security.



### Automation control.

With simple buttons that are modular, customisable and multi-functional, you can control lights and motorised blinds, ensuring maximum cruise comfort.



# EIKON

Luxury, in its purest form.



## EIKON TACTIL

A pure crystal touch for Eikon Tactil, in four precious colours. And sophisticated materials for Eikon Evo, from aluminium to dressed stone, from solid wood to natural leather, to crystal and Corian. Eight styles, three different colours - white, anthracite grey and Next silver - for buttons and controls all sharing the same idea of luxury.

## EIKON EVO



## EIKON CHROME

Beauty is concealed behind the detail. Such as the chrome-plated, shiny and smooth Eikon Chrome frame that surrounds the buttons and controls, in white, anthracite grey and Next silver. A distinctive element underlining the precious materials of both round and classic cover plates. Painted or faced metal; a range of different solid woods; natural brushed steel; crystal in three colour variants.



## EIKON TOTAL LOOK

Light and luminous in white, elegant and sophisticated in anthracite grey, modern and technological in Next silver: Eikon Total Look, with three different colours, expresses the beauty of the absolute. Buttons and devices are perfectly coordinated with the colour of the cover plates and the surrounding frames, exalting their monochrome style.



# PLANA

Sublime essentiality.



Rigorous design, elegant look, refined details. Plana occupies a natural place in various settings and in everyday life, managing and distributing energy without waste thanks to an intelligent technology with intuitive controls that regulates lighting, temperature and appliances to ensure comfort and safety. Two different colours - white and Silver - for buttons and controls. Essential lines in resistant, functional materials, including metal, wood, Reflex and technopolymer, in an infinite range of colour variants. With Plana the energy of the entire house is controlled with an all-Italian essentiality.

Introduction      page 1

By-me              page 2

Control            page 6

Comfort            page 10

Sound system    page 14

Energy efficiency    page 18

Safety                page 22

By-com                page 30

Language            page 34

Offices                page 38

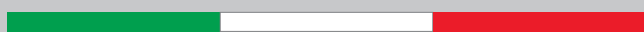
Hotels                page 42

Software            page 46

By-me Marine        page 50

Applications        page 54

Design                page 58



MADE IN ITALY





**VIMAR**

Viale Vicenza, 14 · 36063 Marostica VI · Italy · Tel. +39 0424 488 600 · Fax +39 0424 488 709 · [www.vimar.com](http://www.vimar.com)